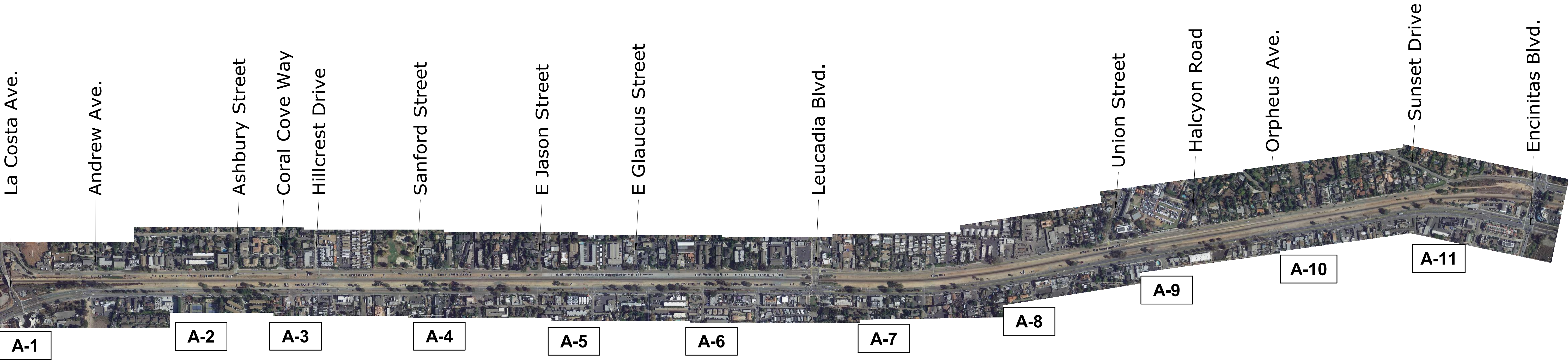
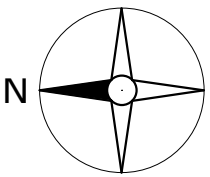


ROW FENCING AT ENCINITAS



1 SHEET MAP INDEX
NTS



ROW FENCING SCHEDULE

ROW FENCING TYPE	LINEAR FEET TOTAL	COMMENTS
POST AND CABLE FENCE	12145'	REFER TO SHEET D-1 FOR DETAILS

GATES	COUNT	COMMENTS
16' ACCESS GATES	6	REFER TO SHEET D-1 FOR DETAILS

REV.	DATE	DESCRIPTION	DES.	ENG.

**NORTH COUNTY
TRANSIT DISTRICT**



DESIGNED BY	-
DRAWN BY	LAB
CHECKED BY	SL
APPROVED BY	TF

ROW FENCING AT ENCINITAS

SUBMITTED: _____ TASK MANAGER _____ APPROVED: _____ PROJECT MANAGER - COMPANY _____

SHEET MAP INDEX

PROJECT NUMBER	519003
SCALE:	1" = 400'-0"
SHEET NO:	T-1
DATE	5/27/2021 1:19:40 PM



0'

20'

40'

80'

160'

N

FENCING LEGEND:

4' HEIGHT - POST AND CABLE FENCE, REFER TO SHEET D-1 FOR DETAILS.

4' HEIGHT x 16' WIDE GATE, POST AND CABLE FENCE, REFER TO SHEET D-1 FOR DETAILS.

GENERAL NOTE:
THE FENCING IS SHOWN IN APPROXIMATE LOCATIONS AND CAN BE ADJUSTED BASED ON SPECIFIC SITE CONDITIONS.

REV.	DATE	DESCRIPTION	DES.	ENG.

**NORTH COUNTY
TRANSIT DISTRICT**



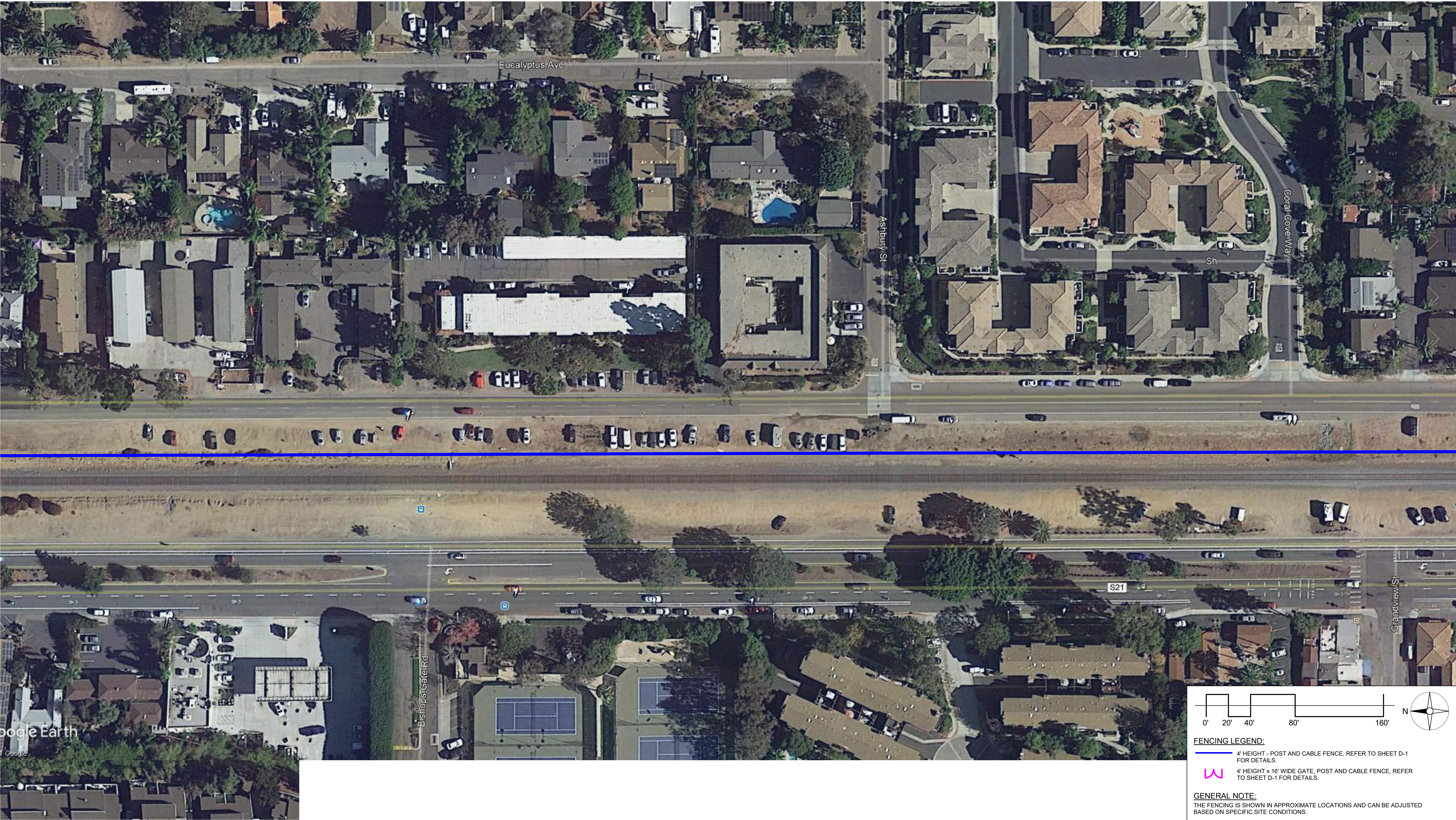
DESIGNED BY	-
DRAWN BY	LAB
CHECKED BY	SL
APPROVED BY	TF

SUBMITTED: _____ TASK MANAGER APPROVED: _____ PROJECT MANAGER COMPANY

ROW FENCING AT ENCINITAS

ROW FENCING

PROJECT NUMBER	519003
SCALE:	1" = 40'-0"
SHEET NO:	A-1
DATE	5/14/2021 8:59:26 AM



REV.	DATE	DESCRIPTION	DES.	ENG.

**NORTH COUNTY
TRANSIT DISTRICT**



DESIGNED BY	-
DRAWN BY	LAB
CHECKED BY	SL
APPROVED BY	TF

SUBMITTED: _____ TASK MANAGER _____ APPROVED: _____ PROJECT MANAGER - COMPANY _____

ROW FENCING AT ENCINITAS

ROW FENCING

PROJECT NUMBER	519003
SCALE:	1" = 40'-0"
SHEET NO:	A-2
DATE	5/14/2021 8:59:27 AM



0'

20'

40'

80'

160'

N

FENCING LEGEND:

4' HEIGHT - POST AND CABLE FENCE, REFER TO SHEET D-1 FOR DETAILS.

4' HEIGHT x 16' WIDE GATE, POST AND CABLE FENCE, REFER TO SHEET D-1 FOR DETAILS.

GENERAL NOTE:

THE FENCING IS SHOWN IN APPROXIMATE LOCATIONS AND CAN BE ADJUSTED BASED ON SPECIFIC SITE CONDITIONS.

REV.	DATE	DESCRIPTION	DES.	ENG.

**NORTH COUNTY
TRANSIT DISTRICT**



DESIGNED BY	-
DRAWN BY	LAB
CHECKED BY	SL
APPROVED BY	TF

SUBMITTED: _____ TASK MANAGER _____ APPROVED: _____ PROJECT MANAGER - COMPANY _____

ROW FENCING AT ENCINITAS

ROW FENCING

PROJECT NUMBER	519003
SCALE:	1" = 40'-0"
SHEET NO:	A-3
DATE	5/14/2021 8:59:27 AM



0'20'40'80'160'

N

FENCING LEGEND:

4' HEIGHT - POST AND CABLE FENCE, REFER TO SHEET D-1 FOR DETAILS.

4' HEIGHT x 16' WIDE GATE, POST AND CABLE FENCE, REFER TO SHEET D-1 FOR DETAILS.

GENERAL NOTE:

THE FENCING IS SHOWN IN APPROXIMATE LOCATIONS AND CAN BE ADJUSTED BASED ON SPECIFIC SITE CONDITIONS.

REV.	DATE	DESCRIPTION	DES.	ENG.

**NORTH COUNTY
TRANSIT DISTRICT**



DESIGNED BY	-
DRAWN BY	LAB
CHECKED BY	SL
APPROVED BY	TF

SUBMITTED: _____ TASK MANAGER _____ APPROVED: _____ PROJECT MANAGER - COMPANY _____

ROW FENCING AT ENCINITAS

ROW FENCING

PROJECT NUMBER	519003
SCALE:	1" = 40'-0"
SHEET NO:	A-4
DATE	5/14/2021 8:59:27 AM



FENCING LEGEND:

- 4' HEIGHT - POST AND CABLE FENCE, REFER TO SHEET D-1 FOR DETAILS.
- 4' HEIGHT x 16' WIDE GATE, POST AND CABLE FENCE, REFER TO SHEET D-1 FOR DETAILS.

GENERAL NOTE:
THE FENCING IS SHOWN IN APPROXIMATE LOCATIONS AND CAN BE ADJUSTED BASED ON SPECIFIC SITE CONDITIONS.

REV.	DATE	DESCRIPTION	DES.	ENG.

**NORTH COUNTY
TRANSIT DISTRICT**



DESIGNED BY	-
DRAWN BY	LAB
CHECKED BY	SL
APPROVED BY	TF

ROW FENCING AT ENCINITAS

SUBMITTED: _____ TASK MANAGER _____ APPROVED: _____ PROJECT MANAGER - COMPANY _____

ROW FENCING

PROJECT NUMBER	519003
SCALE:	1" = 40'-0"
SHEET NO:	A-5
DATE	5/14/2021 8:59:28 AM



0' 20' 40' 80' 160'

N

FENCING LEGEND:

4' HEIGHT - POST AND CABLE FENCE, REFER TO SHEET D-1 FOR DETAILS.

4' HEIGHT x 16' WIDE GATE, POST AND CABLE FENCE, REFER TO SHEET D-1 FOR DETAILS.

GENERAL NOTE:
THE FENCING IS SHOWN IN APPROXIMATE LOCATIONS AND CAN BE ADJUSTED BASED ON SPECIFIC SITE CONDITIONS.

REV.	DATE	DESCRIPTION	DES.	ENG.

**NORTH COUNTY
TRANSIT DISTRICT**



DESIGNED BY	-
DRAWN BY	LAB
CHECKED BY	SL
APPROVED BY	TF

SUBMITTED: _____ TASK MANAGER _____ APPROVED: _____ PROJECT MANAGER - COMPANY _____

ROW FENCING AT ENCINITAS

ROW FENCING

PROJECT NUMBER	519003
SCALE:	1" = 40'-0"
SHEET NO:	A-6
DATE	5/27/2021 1:18:04 PM



0' 20' 40' 80' 160'

N

FENCING LEGEND:

- 4' HEIGHT - POST AND CABLE FENCE, REFER TO SHEET D-1 FOR DETAILS.
- 4' HEIGHT x 16' WIDE GATE, POST AND CABLE FENCE, REFER TO SHEET D-1 FOR DETAILS.

GENERAL NOTE:
THE FENCING IS SHOWN IN APPROXIMATE LOCATIONS AND CAN BE ADJUSTED BASED ON SPECIFIC SITE CONDITIONS.

REV.	DATE	DESCRIPTION	DES.	ENG.

**NORTH COUNTY
TRANSIT DISTRICT**



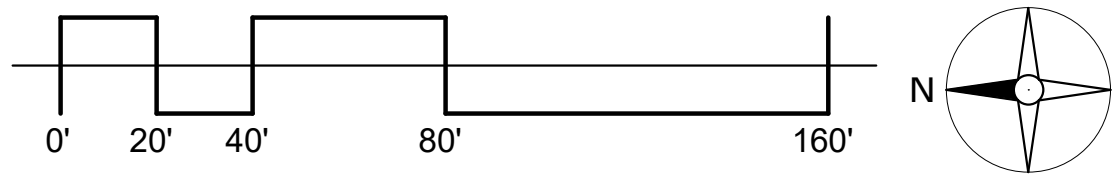
DESIGNED BY	-
DRAWN BY	LAB
CHECKED BY	SL
APPROVED BY	TF

SUBMITTED: _____ TASK MANAGER APPROVED: _____ PROJECT MANAGER COMPANY

ROW FENCING AT ENCINITAS

ROW FENCING

PROJECT NUMBER	519003
SCALE:	1" = 40'-0"
SHEET NO:	A-7
DATE	5/14/2021 8:59:29 AM



FENCING LEGEND:

— 4' HEIGHT - POST AND CABLE FENCE, REFER TO SHEET D-1 FOR DETAILS.

— 4' HEIGHT x 16' WIDE GATE, POST AND CABLE FENCE, REFER TO SHEET D-1 FOR DETAILS.

GENERAL NOTE:
THE FENCING IS SHOWN IN APPROXIMATE LOCATIONS AND CAN BE ADJUSTED BASED ON SPECIFIC SITE CONDITIONS.

REV.	DATE	DESCRIPTION	DES.	ENG.

**NORTH COUNTY
TRANSIT DISTRICT**



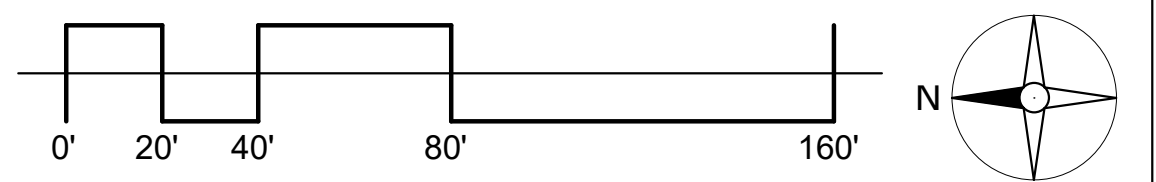
DESIGNED BY	-
DRAWN BY	LAB
CHECKED BY	SL
APPROVED BY	TF

SUBMITTED: _____ TASK MANAGER _____ APPROVED: _____ PROJECT MANAGER - COMPANY _____

ROW FENCING AT ENCINITAS

ROW FENCING

PROJECT NUMBER	519003
SCALE:	1" = 40'-0"
SHEET NO:	A-8
DATE	5/14/2021 8:59:29 AM



FENCING LEGEND:
— 4' HEIGHT - POST AND CABLE FENCE, REFER TO SHEET D-1 FOR DETAILS.
— 4' HEIGHT x 16' WIDE GATE, POST AND CABLE FENCE, REFER TO SHEET D-1 FOR DETAILS.

GENERAL NOTE:
THE FENCING IS SHOWN IN APPROXIMATE LOCATIONS AND CAN BE ADJUSTED BASED ON SPECIFIC SITE CONDITIONS.

REV.	DATE	DESCRIPTION	DES.	ENG.

**NORTH COUNTY
TRANSIT DISTRICT**



DESIGNED BY	-
DRAWN BY	LAB
CHECKED BY	SL
APPROVED BY	TF

SUBMITTED: _____ TASK MANAGER _____ APPROVED: _____ PROJECT MANAGER - COMPANY _____

ROW FENCING AT ENCINITAS

ROW FENCING

PROJECT NUMBER	519003
SCALE:	1" = 40'-0"
SHEET NO:	A-9
DATE	5/14/2021 8:59:30 AM

REV.	DATE	DESCRIPTION	DES.	ENG.



DESIGNED BY	-
DRAWN BY	LAB
CHECKED BY	SL
APPROVED BY	TF

ROW FENCING AT ENCINITAS

ROW FENCING

PROJECT NUMBER 519003

SCALE: 1" = 40'-0"

SHEET NO:

A-10

DATE 5/14/2021 8:59:30 AM



FENCING LEGEND:

- 4' HEIGHT - POST AND CABLE FENCE, REFER TO SHEET D-1 FOR DETAILS.
- 4' HEIGHT x 16' WIDE GATE, POST AND CABLE FENCE, REFER TO SHEET D-1 FOR DETAILS.

GENERAL NOTE:
THE FENCING IS SHOWN IN APPROXIMATE LOCATIONS AND CAN BE ADJUSTED BASED ON SPECIFIC SITE CONDITIONS.

REV.	DATE	DESCRIPTION	DES.	ENG.

**NORTH COUNTY
TRANSIT DISTRICT**



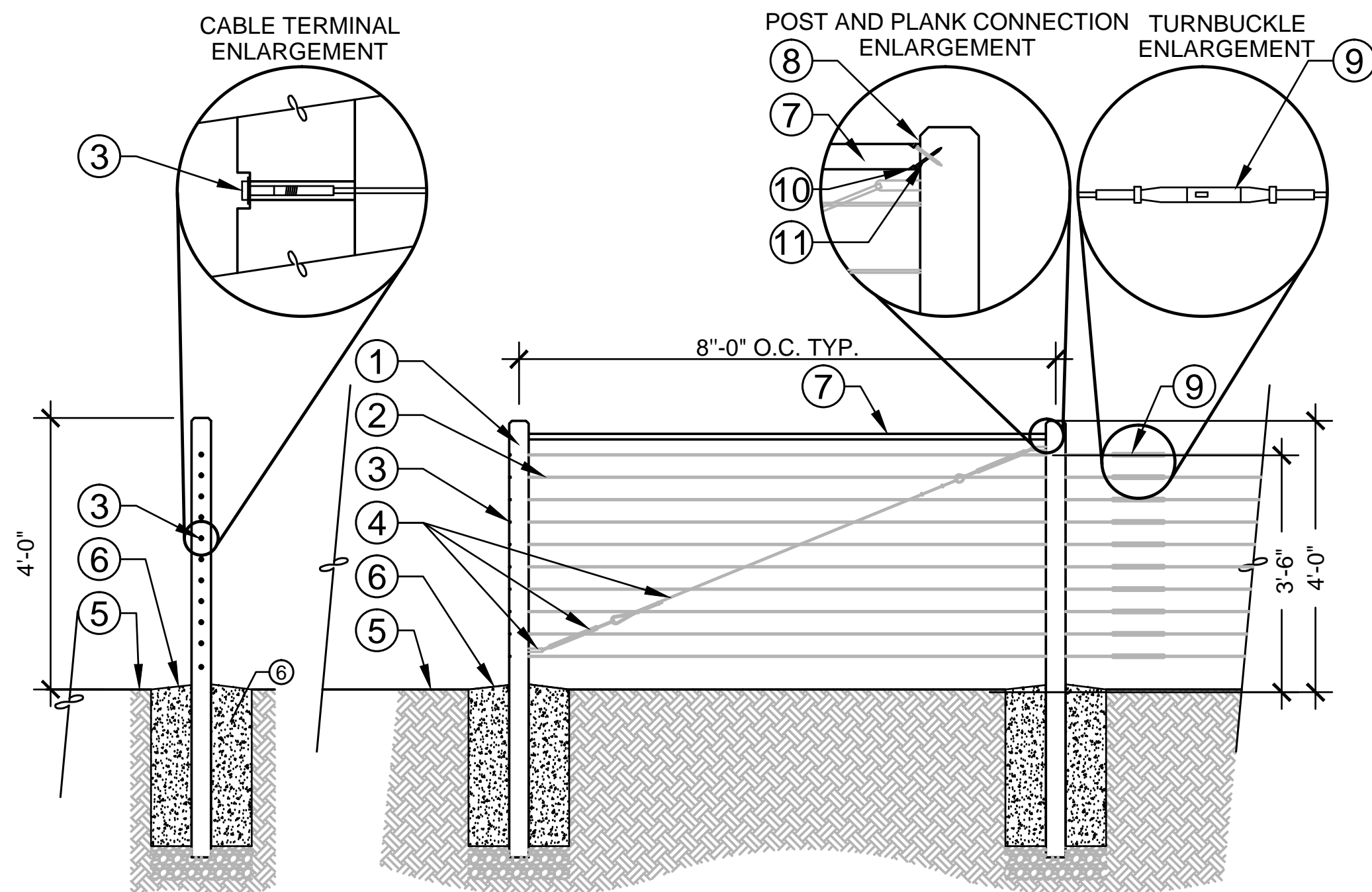
DESIGNED BY	-
DRAWN BY	LAB
CHECKED BY	SL
APPROVED BY	TF

SUBMITTED: _____ TASK MANAGER _____ APPROVED: _____ PROJECT MANAGER - COMPANY _____

ROW FENCING AT ENCINITAS

ROW FENCING

PROJECT NUMBER	519003
SCALE:	1" = 40'-0"
SHEET NO:	A-11
DATE	5/14/2021 8:59:32 AM



- ① 4" x 4" IPE WOOD POST WITH EQUALLY SPACED 3/16" THRU-HOLES, SPACING TO MATCH EXISTING.

② 3/16" DIA. STAINLESS STEEL CABLE.

③ LINE-SIZE THREADED PLUG WITH STAINLESS WASHER AND NUT AT BEGINNING OF CABLE RUN. COUNTER SINK AND GRIND PLUG FLUSH WITH POST.
- ④ CROSS-BRACE CABLE: GALVANIZED STEEL TENSION CABLE 1/4" DIA. CONNECT TO POST WITH STAINLESS STEEL SHOULDER EYE BOLTS. USE ROPE CLIPS AND TURNBUCKLE TO HOLD TENSION ON CABLE. FIELD DRILL THRU-HOLE IN POSTS FOR BOLTS.

⑤ FINISHED GRADE.

⑥ CONCRETE FOOTING SLOPE TO DRAIN AWAY FROM WOOD POST.
- ⑦ 2x4 IPE WOOD PLANK BRACE. INSTALL AT POST SPANS WHERE CROSS-BRACE CABLE IS INSTALLED.

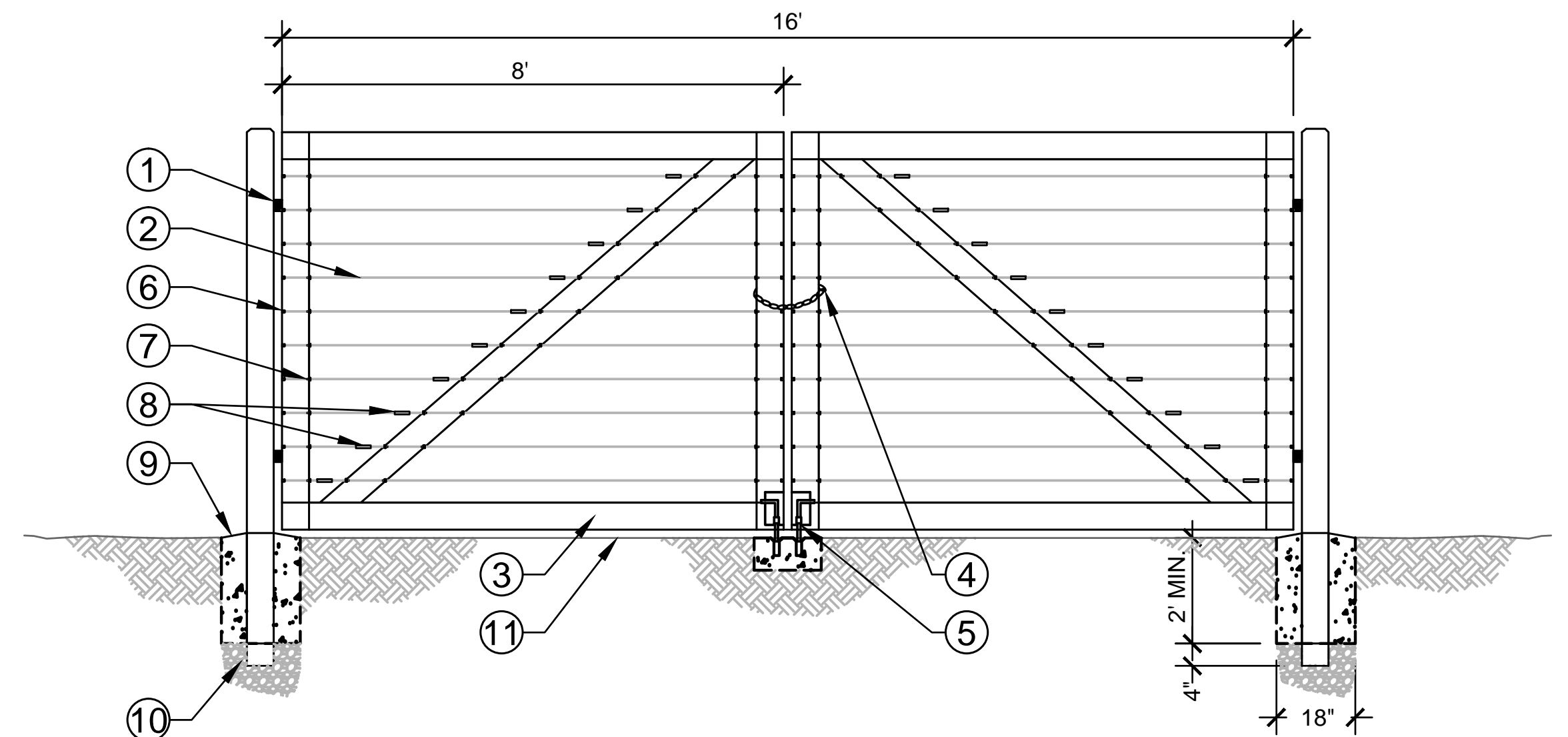
⑧ TOE-NAIL FOUR (4) WOOD SCREWS (TWO TOP, TWO BOTTOM). PRE-DRILL GUIDE HOLES. FILL WITH WOOD PUTTY AND SAND FLAT AFTER SCREW INSTALLATION.

⑨ STAINLESS STEEL TURNBUCKLE ASSEMBLY WITH SWAGED EXTERNAL THREAD ENDS, RH/LH AISI 316 FOR 3/16" STAINLESS STEEL ROPE. PLACE INLINE, VERTICALLY ALIGNED.
- ⑩ MATCH COLOR OF REDWOOD WITH PUTTY SAND TO FINISH.

⑪ WOOD SCREW COUNTER SINK 3/8".

1 CABLE GUARDRAIL SECTION

SCALE: N.T.S.



- ① KNUCKLE HINGE

② 3/16" DIA STAINLESS STEEL CABLE

③ 4"x4" IPE WOOD FRAME

④ CHAIN W/LOCK

⑤ CANE BOLT
- ⑥ LINE-SIZE THREADED PLUG WITH STAINLESS WASHER AND NUT AT BEGINNING OF CABLE RUN. COUNTER SINK AND GRIND PLUG FLUSH WITH POST

⑦ HOLE DRILLED THRU CENTER OF POST, TYP. WITH STAINLESS STEEL SLEEVE

⑧ TURNBUCKLE, TYP. SPACING (ALIGN EVENLY AS SHOWN)
- ⑨ CONCRETE FOOTING, SLOPE TO DRAIN AWAY FROM WOOD POSTS

⑩ GRAVEL

⑪ FINISH GRADE

2 VEHICULAR GATE SECTION

SCALE: N.T.S.

REV.	DATE	DESCRIPTION	DES.	ENG.
1	6/18/21	CLARIFICATION RESPONSE TO RFI #6, 7 & 8		

NORTH COUNTY
TRANSIT DISTRICT



DESIGNED BY	-
DRAWN BY	LAB
CHECKED BY	SL
APPROVED BY	TF

ROW FENCING AT ENCINITAS

SUBMITTED: _____ TASK MANAGER APPROVED: _____ PROJECT MANAGER COMPANY

POST AND CABLE FENCE DETAILS

PROJECT NUMBER	519003
SCALE:	
SHEET NO:	D-1
DATE	6/18/2021 1:33:04 PM

6/18/2021 1:33:04 PM