

# Expressive Activities at Oceanside Transit Center

## **Commercial Activities, Solicitation, and Expressive Activities**

It is the policy of NCTD to reserve NCTD Vehicles and NCTD Transit Facilities for their intended travel-related purposes by limiting the use and conduct therein with the exception for Expressive Activities conducted at certain times, places, and manner.

"Expressive Activities" includes holding any meeting, performing any ceremony, making any speech, address, demonstration, or oration; carrying, exhibiting, displaying or distributing any sign, placard, notice, pamphlet, literature, survey, declaration, or appeal of any kind; conducting or participating in any proselytizing, parading, marching, patrolling, and/or demonstrating, or any other protected Expressive Activities as defined in State or federal law.

**Commercial activities and solicitation of goods, alms, or funds are not allowed.**

**Expressive Activities may NOT be conducted during the following times:**

**5:00 a.m. - 8:30 a.m. or 4:00 p.m. - 7:30 p.m. daily; during special events.**

**Expressive Activities may be conducted only in the areas outlined in the map below.**

All local, State, and Federal laws and regulations must be followed by all participants. Violations of laws may result in eviction from NCTD property or arrest. In addition, no group, organization, or person shall interfere with the safe or efficient passage of transit patrons or NCTD personnel.



The "quadrangle area" bordered on the west by the east edge of the AMTRAK platform canopy, south by the bicycle cover lockers area, east by the planter nearest the west wall of Burger King and north by the rock garden area.



# Expressive Activities at Carlsbad Village COASTER Station

## **Commercial Activities, Solicitation, and Expressive Activities**

It is the policy of NCTD to reserve NCTD Vehicles and NCTD Transit Facilities for their intended travel-related purposes by limiting the use and conduct therein with the exception for Expressive Activities conducted at certain times, places, and manner.

"Expressive Activities" includes holding any meeting, performing any ceremony, making any speech, address, demonstration, or oration; carrying, exhibiting, displaying or distributing any sign, placard, notice, pamphlet, literature, survey, declaration, or appeal of any kind; conducting or participating in any proselytizing, parading, marching, patrolling, and/or demonstrating, or any other protected Expressive Activities as defined in State or federal law.

**Commercial activities and solicitation of goods, alms, or funds are not allowed.**

**Expressive Activities may NOT be conducted during the following times:**

**5:00 a.m. - 8:30 a.m. or 4:00 p.m. - 7:30 p.m. daily; during special events.**

**Expressive Activities may be conducted only in the areas outlined in the map below.**

All local, State, and Federal laws and regulations must be followed by all participants. Violations of laws may result in eviction from NCTD property or arrest. In addition, no group, organization, or person shall interfere with the safe or efficient passage of transit patrons or NCTD personnel.



The "passenger drop-off area" on the east side of the station between the north parking lot and the north entrance to the passenger area closest to the coffee vendor counter.





# Expressive Activities at Carlsbad Poinsettia COASTER Station

## Commercial Activities, Solicitation, and Expressive Activities

It is the policy of NCTD to reserve NCTD Vehicles and NCTD Transit Facilities for their intended travel-related purposes by limiting the use and conduct therein with the exception for Expressive Activities conducted at certain times, places, and manner.

"Expressive Activities" includes holding any meeting, performing any ceremony, making any speech, address, demonstration, or oration; carrying, exhibiting, displaying or distributing any sign, placard, notice, pamphlet, literature, survey, declaration, or appeal of any kind; conducting or participating in any proselytizing, parading, marching, patrolling, and/or demonstrating, or any other protected Expressive Activities as defined in State or federal law.

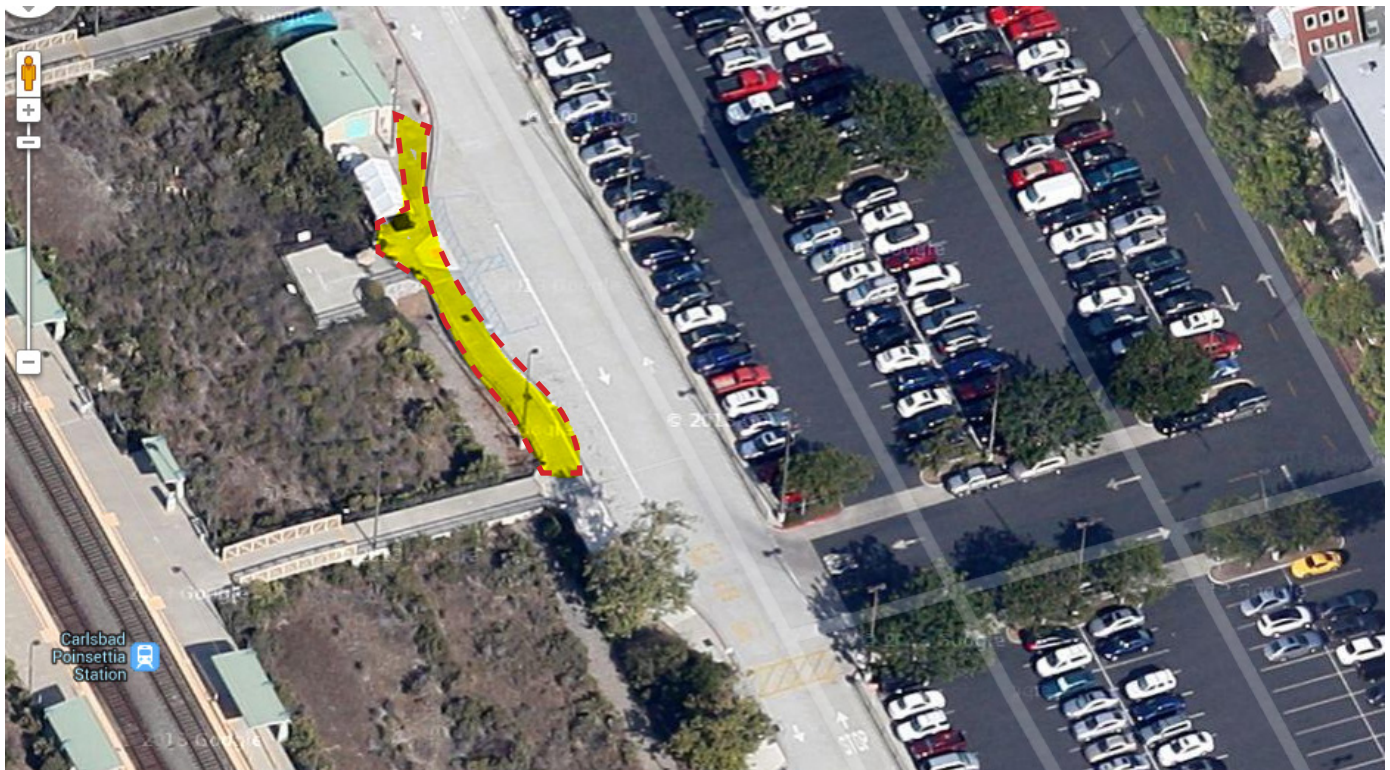
**Commercial activities and solicitation of goods, alms, or funds are not allowed.**

**Expressive Activities may NOT be conducted during the following times:**

**5:00 a.m. - 8:30 a.m. or 4:00 p.m. - 7:30 p.m. daily; during special events.**

**Expressive Activities may be conducted only in the areas outlined in the map below.**

All local, State, and Federal laws and regulations must be followed by all participants. Violations of laws may result in eviction from NCTD property or arrest. In addition, no group, organization, or person shall interfere with the safe or efficient passage of transit patrons or NCTD personnel.



The "passenger drop-off area" east of the restrooms, between the south ramp to the platform and extending north to the north wall of the restroom building.



# Expressive Activities at Encinitas COASTER Station

## Commercial Activities, Solicitation, and Expressive Activities

It is the policy of NCTD to reserve NCTD Vehicles and NCTD Transit Facilities for their intended travel-related purposes by limiting the use and conduct therein with the exception for Expressive Activities conducted at certain times, places, and manner.

"Expressive Activities" includes holding any meeting, performing any ceremony, making any speech, address, demonstration, or oration; carrying, exhibiting, displaying or distributing any sign, placard, notice, pamphlet, literature, survey, declaration, or appeal of any kind; conducting or participating in any proselytizing, parading, marching, patrolling, and/or demonstrating, or any other protected Expressive Activities as defined in State or federal law.

**Commercial activities and solicitation of goods, alms, or funds are not allowed.**

**Expressive Activities may NOT be conducted during the following times:**

**5:00 a.m. - 8:30 a.m. or 4:00 p.m. - 7:30 p.m. daily; during special events.**

**Expressive Activities may be conducted only in the areas outlined in the map below.**

All local, State, and Federal laws and regulations must be followed by all participants. Violations of laws may result in eviction from NCTD property or arrest. In addition, no group, organization, or person shall interfere with the safe or efficient passage of transit patrons or NCTD personnel.



The area bordered by N. D St. and South Vulcan Ave. on the south and east, the platform area to the west and the parking area to the north.





# Expressive Activities at Solana Beach COASTER Station

## Commercial Activities, Solicitation, and Expressive Activities

It is the policy of NCTD to reserve NCTD Vehicles and NCTD Transit Facilities for their intended travel-related purposes by limiting the use and conduct therein with the exception for Expressive Activities conducted at certain times, places, and manner.

"Expressive Activities" includes holding any meeting, performing any ceremony, making any speech, address, demonstration, or oration; carrying, exhibiting, displaying or distributing any sign, placard, notice, pamphlet, literature, survey, declaration, or appeal of any kind; conducting or participating in any proselytizing, parading, marching, patrolling, and/or demonstrating, or any other protected Expressive Activities as defined in State or federal law.

**Commercial activities and solicitation of goods, alms, or funds are not allowed.**

**Expressive Activities may NOT be conducted during the following times:**

**5:00 a.m. - 8:30 a.m. or 4:00 p.m. - 7:30 p.m. daily; during special events.**

**Expressive Activities may be conducted only in the areas outlined in the map below.**

All local, State, and Federal laws and regulations must be followed by all participants. Violations of laws may result in eviction from NCTD property or arrest. In addition, no group, organization, or person shall interfere with the safe or efficient passage of transit patrons or NCTD personnel.



The side walk between the AMTRAK station and the passenger drop-off loop off N. Cedros Ave. extending from the south planters to the north planters.



# Expressive Activities at Sorrento Valley COASTER Station

## Commercial Activities, Solicitation, and Expressive Activities

It is the policy of NCTD to reserve NCTD Vehicles and NCTD Transit Facilities for their intended travel-related purposes by limiting the use and conduct therein with the exception for Expressive Activities conducted at certain times, places, and manner.

"Expressive Activities" includes holding any meeting, performing any ceremony, making any speech, address, demonstration, or oration; carrying, exhibiting, displaying or distributing any sign, placard, notice, pamphlet, literature, survey, declaration, or appeal of any kind; conducting or participating in any proselytizing, parading, marching, patrolling, and/or demonstrating, or any other protected Expressive Activities as defined in State or federal law.

**Commercial activities and solicitation of goods, alms, or funds are not allowed.**

**Expressive Activities may NOT be conducted during the following times:**

**5:00 a.m. - 8:30 a.m. or 4:00 p.m. - 7:30 p.m. daily; during special events.**

**Expressive Activities may be conducted only in the areas outlined in the map below.**

All local, State, and Federal laws and regulations must be followed by all participants. Violations of laws may result in eviction from NCTD property or arrest. In addition, no group, organization, or person shall interfere with the safe or efficient passage of transit patrons or NCTD personnel.



The side walk area east of the platform south of the access ramp and under the freeway overcrossing for a distance of 55 feet south of the south edge of the access ramp.

**Note:** Old Town Station and Santa Fe Depot are not owned by NCTD and we cannot designate areas at these facilities.





# Expressive Activities at Coast Highway SPRINTER Station

## Commercial Activities, Solicitation, and Expressive Activities

It is the policy of NCTD to reserve NCTD Vehicles and NCTD Transit Facilities for their intended travel-related purposes by limiting the use and conduct therein with the exception for Expressive Activities conducted at certain times, places, and manner.

"Expressive Activities" includes holding any meeting, performing any ceremony, making any speech, address, demonstration, or oration; carrying, exhibiting, displaying or distributing any sign, placard, notice, pamphlet, literature, survey, declaration, or appeal of any kind; conducting or participating in any proselytizing, parading, marching, patrolling, and/or demonstrating, or any other protected Expressive Activities as defined in State or federal law.

**Commercial activities and solicitation of goods, alms, or funds are not allowed.**

**Expressive Activities may NOT be conducted during the following times:**

**5:00 a.m. - 8:30 a.m. or 4:00 p.m. - 7:30 p.m. daily; during special events.**

**Expressive Activities may be conducted only in the areas outlined in the map below.**

All local, State, and Federal laws and regulations must be followed by all participants. Violations of laws may result in eviction from NCTD property or arrest. In addition, no group, organization, or person shall interfere with the safe or efficient passage of transit patrons or NCTD personnel.



The upper platform area bordered by the alley way on the east, the parking lot to the north and the 3rd planter from the alley.



# Expressive Activities at Crouch Street SPRINTER Station

## Commercial Activities, Solicitation, and Expressive Activities

It is the policy of NCTD to reserve NCTD Vehicles and NCTD Transit Facilities for their intended travel-related purposes by limiting the use and conduct therein with the exception for Expressive Activities conducted at certain times, places, and manner.

"Expressive Activities" includes holding any meeting, performing any ceremony, making any speech, address, demonstration, or oration; carrying, exhibiting, displaying or distributing any sign, placard, notice, pamphlet, literature, survey, declaration, or appeal of any kind; conducting or participating in any proselytizing, parading, marching, patrolling, and/or demonstrating, or any other protected Expressive Activities as defined in State or federal law.

**Commercial activities and solicitation of goods, alms, or funds are not allowed.**

**Expressive Activities may NOT be conducted during the following times:**

**5:00 a.m. - 8:30 a.m. or 4:00 p.m. - 7:30 p.m. daily; during special events.**

**Expressive Activities may be conducted only in the areas outlined in the map below.**

All local, State, and Federal laws and regulations must be followed by all participants. Violations of laws may result in eviction from NCTD property or arrest. In addition, no group, organization, or person shall interfere with the safe or efficient passage of transit patrons or NCTD personnel.



The side walk in the south parking area bordered by Crouch Street on the east, the planter on the north and the narrowing of the walkway to the west.





# Expressive Activities at Rancho Del Oro SPRINTER Station

## Commercial Activities, Solicitation, and Expressive Activities

It is the policy of NCTD to reserve NCTD Vehicles and NCTD Transit Facilities for their intended travel-related purposes by limiting the use and conduct therein with the exception for Expressive Activities conducted at certain times, places, and manner.

"Expressive Activities" includes holding any meeting, performing any ceremony, making any speech, address, demonstration, or oration; carrying, exhibiting, displaying or distributing any sign, placard, notice, pamphlet, literature, survey, declaration, or appeal of any kind; conducting or participating in any proselytizing, parading, marching, patrolling, and/or demonstrating, or any other protected Expressive Activities as defined in State or federal law.

**Commercial activities and solicitation of goods, alms, or funds are not allowed.**

**Expressive Activities may NOT be conducted during the following times:**

**5:00 a.m. - 8:30 a.m. or 4:00 p.m. - 7:30 p.m. daily; during special events.**

**Expressive Activities may be conducted only in the areas outlined in the map below.**

All local, State, and Federal laws and regulations must be followed by all participants. Violations of laws may result in eviction from NCTD property or arrest. In addition, no group, organization, or person shall interfere with the safe or efficient passage of transit patrons or NCTD personnel.



The side walk area of the parking lot on the east side of the spaces, from the driveway north to the end of the walkway.

# Expressive Activities at El Camino Real SPRINTER Station

## Commercial Activities, Solicitation, and Expressive Activities

It is the policy of NCTD to reserve NCTD Vehicles and NCTD Transit Facilities for their intended travel-related purposes by limiting the use and conduct therein with the exception for Expressive Activities conducted at certain times, places, and manner.

"Expressive Activities" includes holding any meeting, performing any ceremony, making any speech, address, demonstration, or oration; carrying, exhibiting, displaying or distributing any sign, placard, notice, pamphlet, literature, survey, declaration, or appeal of any kind; conducting or participating in any proselytizing, parading, marching, patrolling, and/or demonstrating, or any other protected Expressive Activities as defined in State or federal law.

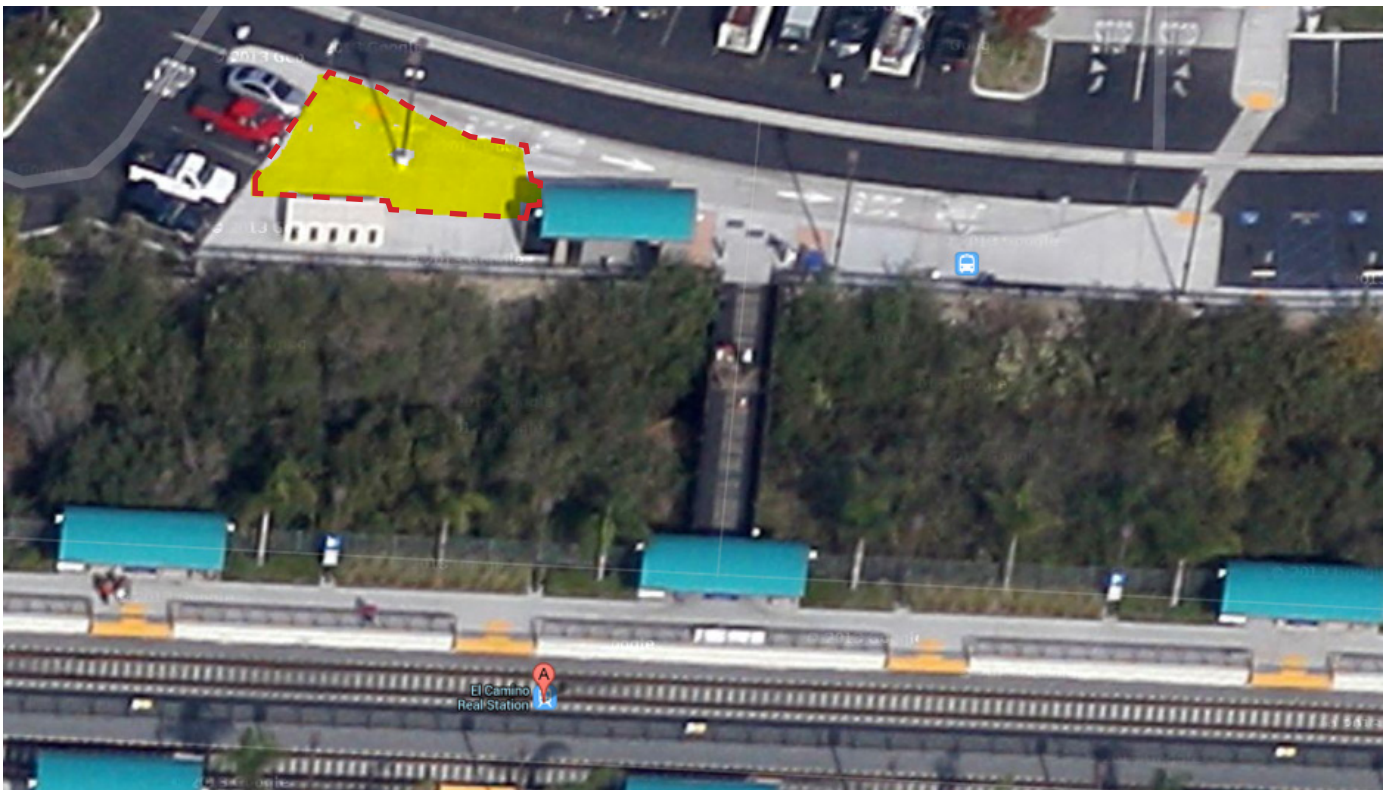
**Commercial activities and solicitation of goods, alms, or funds are not allowed.**

**Expressive Activities may NOT be conducted during the following times:**

**5:00 a.m. - 8:30 a.m. or 4:00 p.m. - 7:30 p.m. daily; during special events.**

**Expressive Activities may be conducted only in the areas outlined in the map below.**

All local, State, and Federal laws and regulations must be followed by all participants. Violations of laws may result in eviction from NCTD property or arrest. In addition, no group, organization, or person shall interfere with the safe or efficient passage of transit patrons or NCTD personnel.



The triangular cement area border by the parking to the west, the drive area to the north, the bicycle lockers to the south and the TVM machines to the east.





# Expressive Activities at College Blvd. SPRINTER Station

## **Commercial Activities, Solicitation, and Expressive Activities**

It is the policy of NCTD to reserve NCTD Vehicles and NCTD Transit Facilities for their intended travel-related purposes by limiting the use and conduct therein with the exception for Expressive Activities conducted at certain times, places, and manner.

"Expressive Activities" includes holding any meeting, performing any ceremony, making any speech, address, demonstration, or oration; carrying, exhibiting, displaying or distributing any sign, placard, notice, pamphlet, literature, survey, declaration, or appeal of any kind; conducting or participating in any proselytizing, parading, marching, patrolling, and/or demonstrating, or any other protected Expressive Activities as defined in State or federal law.

**Commercial activities and solicitation of goods, alms, or funds are not allowed.**

**Expressive Activities may NOT be conducted during the following times:**

**5:00 a.m. - 8:30 a.m. or 4:00 p.m. - 7:30 p.m. daily; during special events.**

**Expressive Activities may be conducted only in the areas outlined in the map below.**

All local, State, and Federal laws and regulations must be followed by all participants. Violations of laws may result in eviction from NCTD property or arrest. In addition, no group, organization, or person shall interfere with the safe or efficient passage of transit patrons or NCTD personnel.



The walkway area on the south of the parking lot between the planter to the west and the TVM machines to the east.



# Expressive Activities at Melrose Drive SPRINTER Station

## Commercial Activities, Solicitation, and Expressive Activities

It is the policy of NCTD to reserve NCTD Vehicles and NCTD Transit Facilities for their intended travel-related purposes by limiting the use and conduct therein with the exception for Expressive Activities conducted at certain times, places, and manner.

"Expressive Activities" includes holding any meeting, performing any ceremony, making any speech, address, demonstration, or oration; carrying, exhibiting, displaying or distributing any sign, placard, notice, pamphlet, literature, survey, declaration, or appeal of any kind; conducting or participating in any proselytizing, parading, marching, patrolling, and/or demonstrating, or any other protected Expressive Activities as defined in State or federal law.

**Commercial activities and solicitation of goods, alms, or funds are not allowed.**

**Expressive Activities may NOT be conducted during the following times:**

**5:00 a.m. - 8:30 a.m. or 4:00 p.m. - 7:30 p.m. daily; during special events.**

**Expressive Activities may be conducted only in the areas outlined in the map below.**

All local, State, and Federal laws and regulations must be followed by all participants. Violations of laws may result in eviction from NCTD property or arrest. In addition, no group, organization, or person shall interfere with the safe or efficient passage of transit patrons or NCTD personnel.



The walkway on the south side of the parking lot, bordered by the parking spaces to the east, the fence to the south and the access ramp to the west.





# Expressive Activities at Vista Transit Center SPRINTER Station

## Commercial Activities, Solicitation, and Expressive Activities

It is the policy of NCTD to reserve NCTD Vehicles and NCTD Transit Facilities for their intended travel-related purposes by limiting the use and conduct therein with the exception for Expressive Activities conducted at certain times, places, and manner.

"Expressive Activities" includes holding any meeting, performing any ceremony, making any speech, address, demonstration, or oration; carrying, exhibiting, displaying or distributing any sign, placard, notice, pamphlet, literature, survey, declaration, or appeal of any kind; conducting or participating in any proselytizing, parading, marching, patrolling, and/or demonstrating, or any other protected Expressive Activities as defined in State or federal law.

**Commercial activities and solicitation of goods, alms, or funds are not allowed.**

**Expressive Activities may NOT be conducted during the following times:**

**5:00 a.m. - 8:30 a.m. or 4:00 p.m. - 7:30 p.m. daily; during special events.**

**Expressive Activities may be conducted only in the areas outlined in the map below.**

All local, State, and Federal laws and regulations must be followed by all participants. Violations of laws may result in eviction from NCTD property or arrest. In addition, no group, organization, or person shall interfere with the safe or efficient passage of transit patrons or NCTD personnel.



The sidewalk area just east of the SPRINTER Platform in the parking lot north of the bicycle lookers and south of the large planter on the north side of the handicapped parking spaces.



# Expressive Activities at Vista Civic Center (Escondido Ave.) **SPRINTER** Station

## **Commercial Activities, Solicitation, and Expressive Activities**

It is the policy of NCTD to reserve NCTD Vehicles and NCTD Transit Facilities for their intended travel-related purposes by limiting the use and conduct therein with the exception for Expressive Activities conducted at certain times, places, and manner.

"Expressive Activities" includes holding any meeting, performing any ceremony, making any speech, address, demonstration, or oration; carrying, exhibiting, displaying or distributing any sign, placard, notice, pamphlet, literature, survey, declaration, or appeal of any kind; conducting or participating in any proselytizing, parading, marching, patrolling, and/or demonstrating, or any other protected Expressive Activities as defined in State or federal law.

**Commercial activities and solicitation of goods, alms, or funds are not allowed.**

**Expressive Activities may NOT be conducted during the following times:**

**5:00 a.m. - 8:30 a.m. or 4:00 p.m. - 7:30 p.m. daily; during special events.**

**Expressive Activities may be conducted only in the areas outlined in the map below.**

All local, State, and Federal laws and regulations must be followed by all participants. Violations of laws may result in eviction from NCTD property or arrest. In addition, no group, organization, or person shall interfere with the safe or efficient passage of transit patrons or NCTD personnel.



The walkway bordered by Civic Center Drive on the west, the parking areas to the south, the fence to the north and the east end of the mechanical boxes along the north side.





# Expressive Activities at Buena Creek SPRINTER Station

## Commercial Activities, Solicitation, and Expressive Activities

It is the policy of NCTD to reserve NCTD Vehicles and NCTD Transit Facilities for their intended travel-related purposes by limiting the use and conduct therein with the exception for Expressive Activities conducted at certain times, places, and manner.

"Expressive Activities" includes holding any meeting, performing any ceremony, making any speech, address, demonstration, or oration; carrying, exhibiting, displaying or distributing any sign, placard, notice, pamphlet, literature, survey, declaration, or appeal of any kind; conducting or participating in any proselytizing, parading, marching, patrolling, and/or demonstrating, or any other protected Expressive Activities as defined in State or federal law.

**Commercial activities and solicitation of goods, alms, or funds are not allowed.**

**Expressive Activities may NOT be conducted during the following times:**

**5:00 a.m. - 8:30 a.m. or 4:00 p.m. - 7:30 p.m. daily; during special events.**

**Expressive Activities may be conducted only in the areas outlined in the map below.**

All local, State, and Federal laws and regulations must be followed by all participants. Violations of laws may result in eviction from NCTD property or arrest. In addition, no group, organization, or person shall interfere with the safe or efficient passage of transit patrons or NCTD personnel.



The walkway north of the platform starting at the first planter and continuing east to the east end of the western most canopy.



# Expressive Activities at Palomar College SPRINTER Station

## Commercial Activities, Solicitation, and Expressive Activities

It is the policy of NCTD to reserve NCTD Vehicles and NCTD Transit Facilities for their intended travel-related purposes by limiting the use and conduct therein with the exception for Expressive Activities conducted at certain times, places, and manner.

"Expressive Activities" includes holding any meeting, performing any ceremony, making any speech, address, demonstration, or oration; carrying, exhibiting, displaying or distributing any sign, placard, notice, pamphlet, literature, survey, declaration, or appeal of any kind; conducting or participating in any proselytizing, parading, marching, patrolling, and/or demonstrating, or any other protected Expressive Activities as defined in State or federal law.

**Commercial activities and solicitation of goods, alms, or funds are not allowed.**

**Expressive Activities may NOT be conducted during the following times:**

**5:00 a.m. - 8:30 a.m. or 4:00 p.m. - 7:30 p.m. daily; during special events.**

**Expressive Activities may be conducted only in the areas outlined in the map below.**

All local, State, and Federal laws and regulations must be followed by all participants. Violations of laws may result in eviction from NCTD property or arrest. In addition, no group, organization, or person shall interfere with the safe or efficient passage of transit patrons or NCTD personnel.



The cement area located at the bottom of the platform steps, extending to the beginning of the drop off lane and bordered on the east by the parking spaces.





# Expressive Activities at San Marcos Civic Center SPRINTER Station

## Commercial Activities, Solicitation, and Expressive Activities

It is the policy of NCTD to reserve NCTD Vehicles and NCTD Transit Facilities for their intended travel-related purposes by limiting the use and conduct therein with the exception for Expressive Activities conducted at certain times, places, and manner.

"Expressive Activities" includes holding any meeting, performing any ceremony, making any speech, address, demonstration, or oration; carrying, exhibiting, displaying or distributing any sign, placard, notice, pamphlet, literature, survey, declaration, or appeal of any kind; conducting or participating in any proselytizing, parading, marching, patrolling, and/or demonstrating, or any other protected Expressive Activities as defined in State or federal law.

**Commercial activities and solicitation of goods, alms, or funds are not allowed.**

**Expressive Activities may NOT be conducted during the following times:**

**5:00 a.m. - 8:30 a.m. or 4:00 p.m. - 7:30 p.m. daily; during special events.**

**Expressive Activities may be conducted only in the areas outlined in the map below.**

All local, State, and Federal laws and regulations must be followed by all participants. Violations of laws may result in eviction from NCTD property or arrest. In addition, no group, organization, or person shall interfere with the safe or efficient passage of transit patrons or NCTD personnel.



The walkway area on the south side of the station bordered by the eastern most bicycle lockers to the north and west, the dirt lot (future parking lot) to the south and the sidewalk along E. San Marcos Blvd. to the east.



# Expressive Activities at Cal State San Marcos SPRINTER Station

## Commercial Activities, Solicitation, and Expressive Activities

It is the policy of NCTD to reserve NCTD Vehicles and NCTD Transit Facilities for their intended travel-related purposes by limiting the use and conduct therein with the exception for Expressive Activities conducted at certain times, places, and manner.

"Expressive Activities" includes holding any meeting, performing any ceremony, making any speech, address, demonstration, or oration; carrying, exhibiting, displaying or distributing any sign, placard, notice, pamphlet, literature, survey, declaration, or appeal of any kind; conducting or participating in any proselytizing, parading, marching, patrolling, and/or demonstrating, or any other protected Expressive Activities as defined in State or federal law.

**Commercial activities and solicitation of goods, alms, or funds are not allowed.**

**Expressive Activities may NOT be conducted during the following times:**

**5:00 a.m. - 8:30 a.m. or 4:00 p.m. - 7:30 p.m. daily; during special events.**

**Expressive Activities may be conducted only in the areas outlined in the map below.**

All local, State, and Federal laws and regulations must be followed by all participants. Violations of laws may result in eviction from NCTD property or arrest. In addition, no group, organization, or person shall interfere with the safe or efficient passage of transit patrons or NCTD personnel.



The cement area located at the corner of E. Barham Drive and La Moree Road to the north and east, the planters to the west and the bicycle lockers to the south.





# Expressive Activities at Nordahl Rd. SPRINTER Station

## Commercial Activities, Solicitation, and Expressive Activities

It is the policy of NCTD to reserve NCTD Vehicles and NCTD Transit Facilities for their intended travel-related purposes by limiting the use and conduct therein with the exception for Expressive Activities conducted at certain times, places, and manner.

"Expressive Activities" includes holding any meeting, performing any ceremony, making any speech, address, demonstration, or oration; carrying, exhibiting, displaying or distributing any sign, placard, notice, pamphlet, literature, survey, declaration, or appeal of any kind; conducting or participating in any proselytizing, parading, marching, patrolling, and/or demonstrating, or any other protected Expressive Activities as defined in State or federal law.

**Commercial activities and solicitation of goods, alms, or funds are not allowed.**

**Expressive Activities may NOT be conducted during the following times:**

**5:00 a.m. - 8:30 a.m. or 4:00 p.m. - 7:30 p.m. daily; during special events.**

**Expressive Activities may be conducted only in the areas outlined in the map below.**

All local, State, and Federal laws and regulations must be followed by all participants. Violations of laws may result in eviction from NCTD property or arrest. In addition, no group, organization, or person shall interfere with the safe or efficient passage of transit patrons or NCTD personnel.



The paved area north of the station between the sidewalk along W. Mission Road from the east platform entrance to the east edge of the second canopy to the west.



# Expressive Activities at Escondido Transit Center

## Commercial Activities, Solicitation, and Expressive Activities

It is the policy of NCTD to reserve NCTD Vehicles and NCTD Transit Facilities for their intended travel-related purposes by limiting the use and conduct therein with the exception for Expressive Activities conducted at certain times, places, and manner.

"Expressive Activities" includes holding any meeting, performing any ceremony, making any speech, address, demonstration, or oration; carrying, exhibiting, displaying or distributing any sign, placard, notice, pamphlet, literature, survey, declaration, or appeal of any kind; conducting or participating in any proselytizing, parading, marching, patrolling, and/or demonstrating, or any other protected Expressive Activities as defined in State or federal law.

**Commercial activities and solicitation of goods, alms, or funds are not allowed.**

**Expressive Activities may NOT be conducted during the following times:**

**5:00 a.m. - 8:30 a.m. or 4:00 p.m. - 7:30 p.m. daily; during special events.**

**Expressive Activities may be conducted only in the areas outlined in the map below.**

All local, State, and Federal laws and regulations must be followed by all participants. Violations of laws may result in eviction from NCTD property or arrest. In addition, no group, organization, or person shall interfere with the safe or efficient passage of transit patrons or NCTD personnel.



The area bordered by N. Quince St. on the east, W. Valley Parkway on the south, the south edge of the nearest tower to that intersection to the north, and the west edge of that tower to the west.





# Expressive Activities at San Luis Rey Transit Center

## Commercial Activities, Solicitation, and Expressive Activities

It is the policy of NCTD to reserve NCTD Vehicles and NCTD Transit Facilities for their intended travel-related purposes by limiting the use and conduct therein with the exception for Expressive Activities conducted at certain times, places, and manner.

"Expressive Activities" includes holding any meeting, performing any ceremony, making any speech, address, demonstration, or oration; carrying, exhibiting, displaying or distributing any sign, placard, notice, pamphlet, literature, survey, declaration, or appeal of any kind; conducting or participating in any proselytizing, parading, marching, patrolling, and/or demonstrating, or any other protected Expressive Activities as defined in State or federal law.

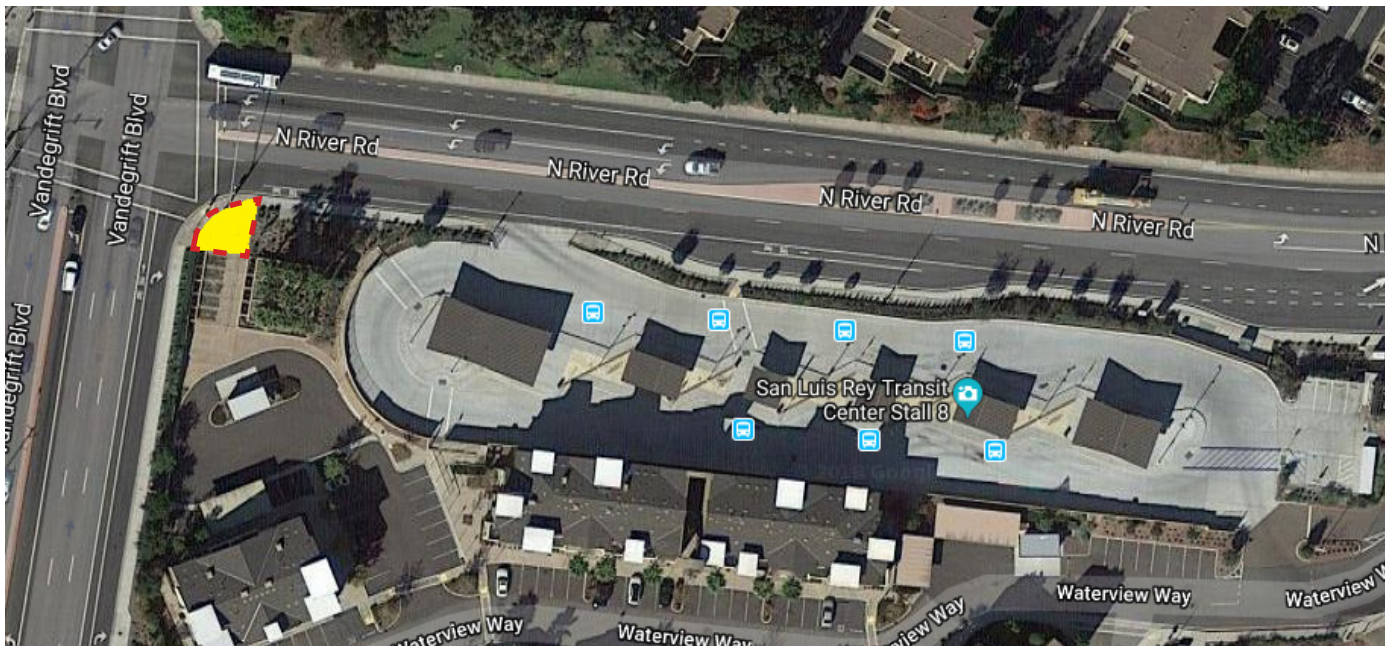
**Commercial activities and solicitation of goods, alms, or funds are not allowed.**

**Expressive Activities may NOT be conducted during the following times:**

**5:00 a.m. - 8:30 a.m. or 4:00 p.m. - 7:30 p.m. daily; during special events.**

**Expressive Activities may be conducted only in the areas outlined in the map below.**

All local, State, and Federal laws and regulations must be followed by all participants. Violations of laws may result in eviction from NCTD property or arrest. In addition, no group, organization, or person shall interfere with the safe or efficient passage of transit patrons or NCTD personnel.



The designated expressive activities location is the level paved area at the west end of the property, south of the Transit Center sign, west of the raised masonry planters, and north of the concrete stairway. The area is adjacent to the intersection of North River Road and Vandergrift Boulevard.

